

# Presentation to ARGEIAD

Department of Jobs, Immigration and Growth  
Government of Newfoundland and Labrador  
May 2025

# Immigration Drives Population Growth

- Despite strong recent performance in immigration, Statistics Canada projects Newfoundland and Labrador's population to decline between 2025 and 2049.
  - NL is the only province forecasted to have a declining population.
- Immigration is central to population growth in NL.
- Gains in net inter-provincial and net international immigration have outstripped losses in natural population growth
- In 2024, 4,410 of 5,755 new permanent residents (77 per cent) arrived via provincial immigration programs. This totals 7,491 individuals across both programs, a 15 per cent increase from 2023.
- Retaining a focus on client service delivery as a core mandate.
- Investing in retaining newcomers through Settlement Grants for organizations.
- NL has only received its requested allocation once (in 2023). All other years, IRCC has allocated less to NL than the province's request.
  - 2025: 2,525 received (4,035 requested)

# Current Performance:

If all primary nominees of JIG since January 2023 were a community of 100 people, there would be...



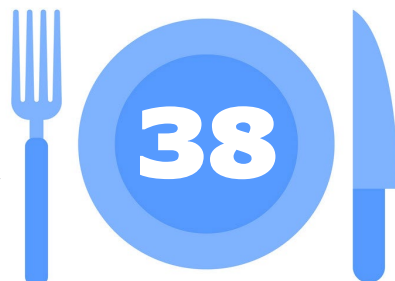
working in health care



working in construction



working in K-12 and early childhood education



working in accommodation and food service

71

people from one of these five countries



India

Ukraine

Nigeria

Philippines

Bangladesh

9

residing in Labrador

37

residing in Newfoundland outside St. John's CMA

63

residing in St. John's CMA

2

aged 19-21

62

aged 22-35

29

aged 36-45

7

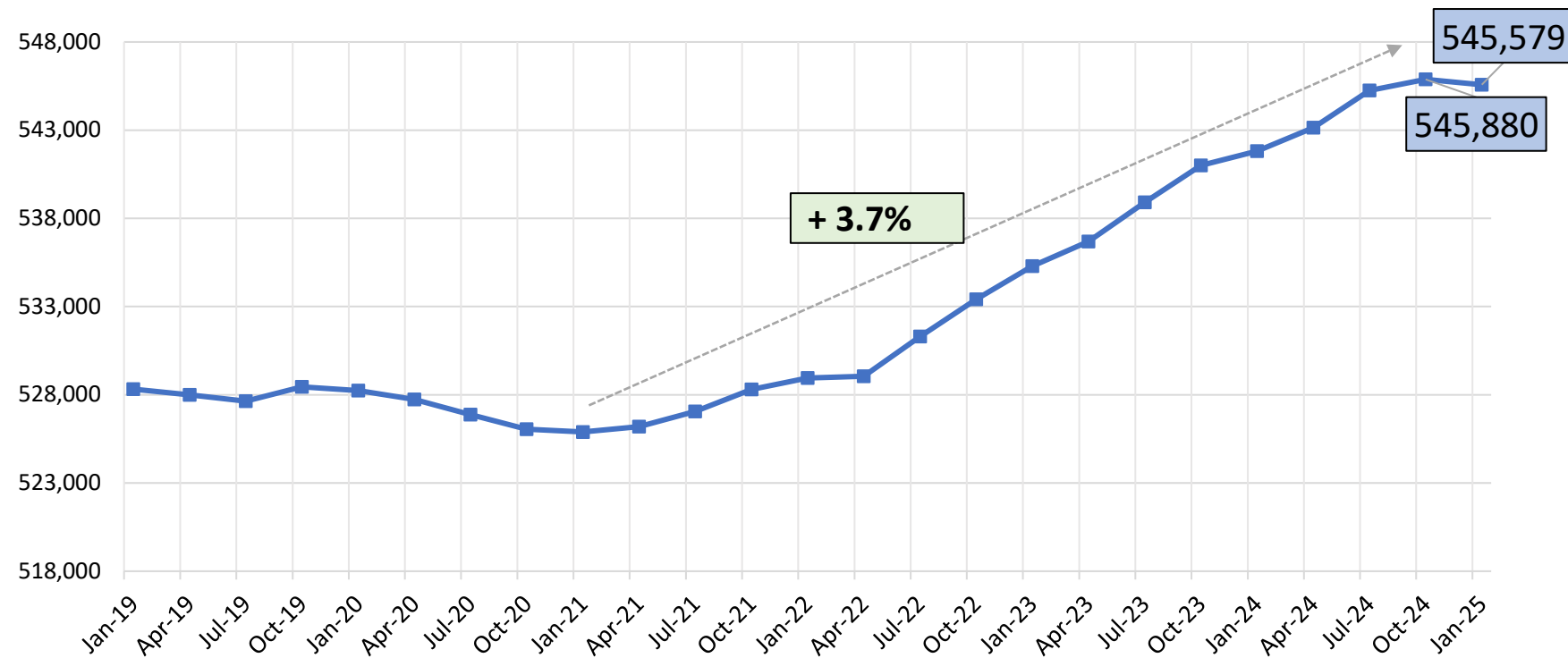
aged 46+

an average age of

33

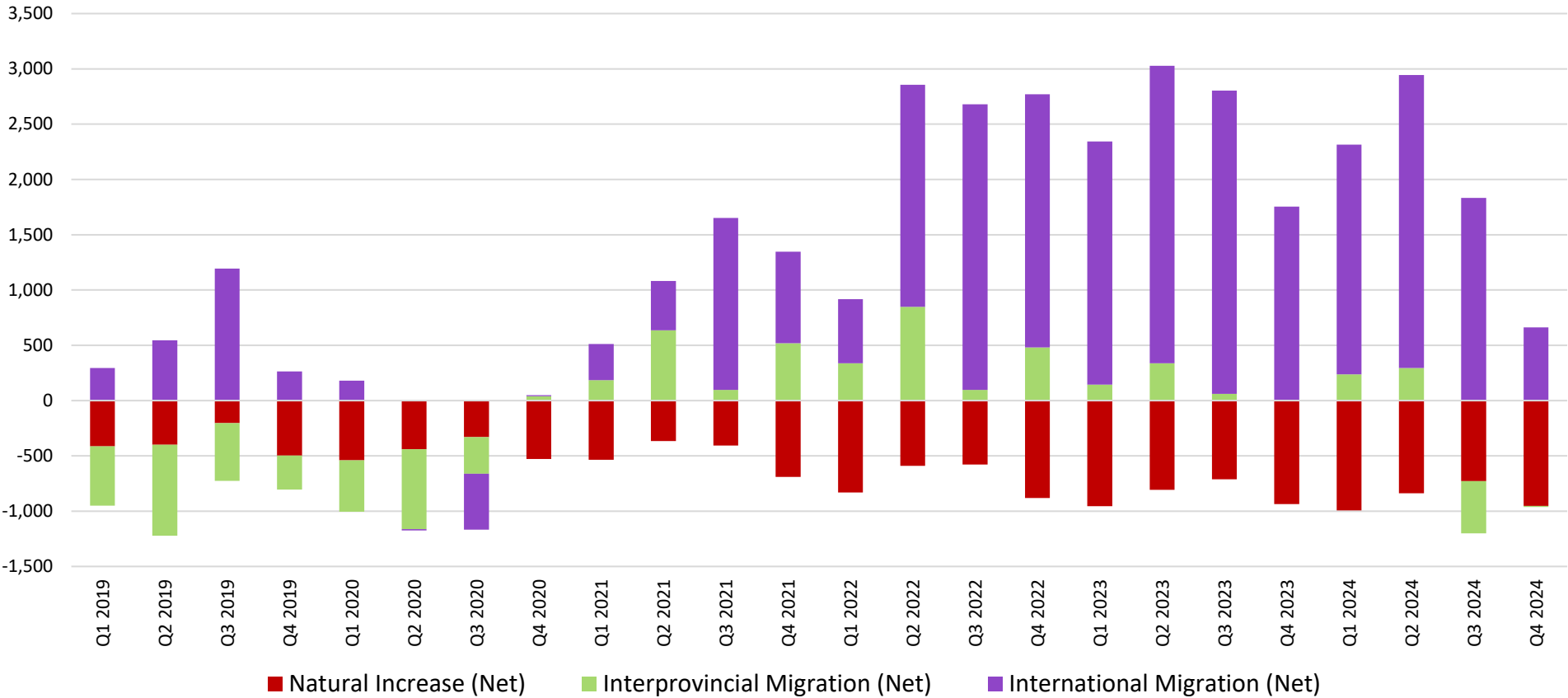
# Population Increases (Up to Q4 2024)

NL Quarterly Population Jan 2019 to Jan 2025



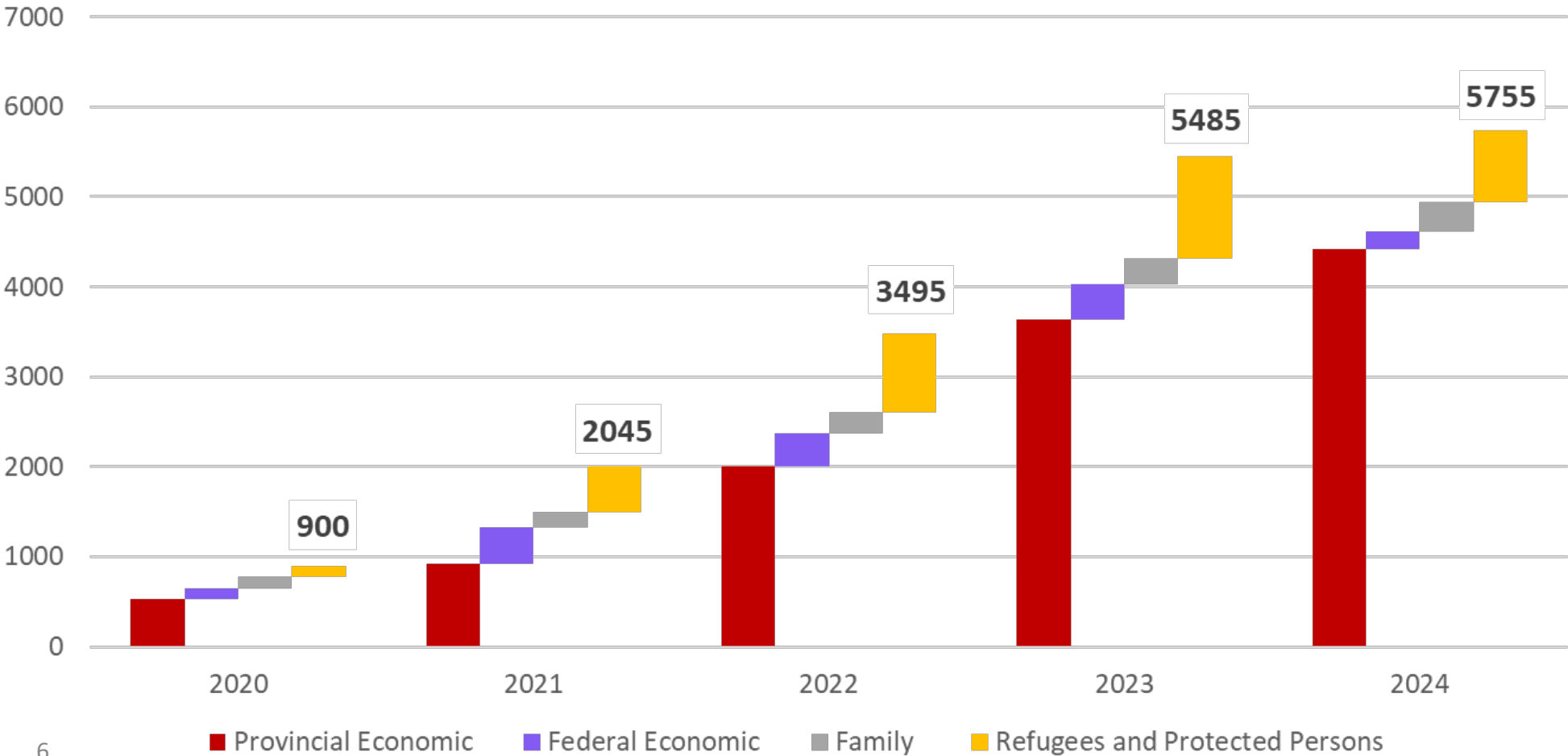
# Immigration Drives Population Growth

Changes in Components of Population Change in NL  
(Q1 2019 to Q4 2024)



# Significant Immigration Levels Enabled 1% Annual Population Growth

New Permanent Residents, by Pathway, 2020 to 2024



# Shifting Priorities

- Due to rising application volumes, NL has launched an Expression of Interest intake system, allowing the province to more easily select newcomers through merit-based criteria:
  - Economically strategic occupations (e.g., health care, construction, education, natural resources, technology)
  - Temporary residents already working for NL employers in priority roles
  - International graduates of Memorial University and College of the North Atlantic
  - Applicants working in rural communities
- Leveraging the strength and international draw of educational institutions.
  - 16% of admissions graduated from a post-secondary educational institution in the province.
- Filling critical labour market gaps
  - ~23% of 2024 admissions filled health care vacancies.
  - ~2% of 2024 admissions filled roles in computer programming and interactive media development.
  - ~5% of 2024 admissions filled roles in skilled trades related occupations.
- Reducing barriers to qualification recognition
  - Establishing a Fair Registration Practices Act and Office to ease access to credential recognition.
  - Collaborating with other Canadian governments to improve access to labour mobility.

# Efforts to Restore Capacity - Humanitarian Migrants

- NL has committed to support the relocation of **290** humanitarian migrants to the province by 2027. Of the **290**, **55** individuals have arrived to date.
- As of April 2025, 27 humanitarian migrants' families have found employment in eight communities: Hopedale, Bay de Verde, Harbour Breton, Grand Falls-Windsor, Port aux Basques, St. John's, and St. Alban's.
- Migrants are contributing to sectors experiencing critical shortages, including aquaculture, health care, and construction. A further, **700** humanitarian migrants with skills in health care, early childhood education, construction, business administration, retail sales, and food service have expressed interest in relocating to the province.